

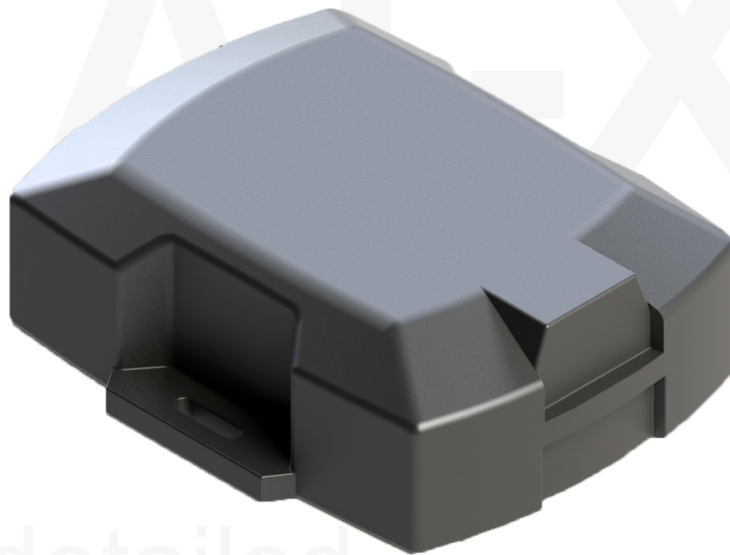
# AT-X5

## Features >

- Configurable for 1-second, 5-second or 10-second live tracking
- Small - 3.125"L x 2.5"W x .875"H - ideal for covert installation
- Rugged, water resistant housing, solid state circuit - quality throughout
- Multiple alert notifications by email or text message (geofences, speed, etc.)
- 100% web-based | no software to install | accessible from anywhere
- Hassle free hardware installation - no batteries to replace
- 3 wire installation (power, ground and ignition)
- Ignition + 1 input and 1 output
- Internal 700 mAh backup battery

# The USFT AT-X5

Dimensions	3.125"L x 2.5"W x .875"H
Operating Temperature	-20° C to 75° C (external power)   -20° C to 50° C (battery power)
Operating Voltage Range	9 - 30 VDC
Typical Full-power Current	70mA at 12 VDC
GSM Channels	850/1900 (United States) 900/1800 (Europe, Australia, Asia and Middle East)
Update Frequency	1-second, 5-second or 10-second position updates (truly live tracking)
Input/Output	1 ignition input, 1 additional input and 1 output
Antenna	Internal dual-mode GSM/GPRS+GPS
Notifications	Multiple alert options (geofences, speed, ignition, etc.) via text message or email
Historical Playback	90 days of historical playback stored at server
Reporting	Individual vehicle report, start/stop report, excessive idling report and more...
Backup Battery	700 mAh   3 hour charge time
Enclosure	IP66   Water-resistant



 **USFleetTracking**

# AT-X5